

Education and Culture

Socrates

Minerva



learn@work

This project has been funded with support from the European Commission. This publication reflects the views only of the author, and the Commission cannot be held responsible for any use which may be made of the information contained therein.



- Learn@Work is the Socrates – Minerva project funded with support from the European Commission
- Duration of the project: October 2005 – September 2007
- The main aim of Learn@Work is to enhance the induction and support for learners in the workplace using ICT tools



Website of the Learn@Work project:

[www.learnatwork.info](http://www.learnatwork.info)

Online repository for the project documents  
will be available for a public access soon

## Participating Partners



Audio visual Technologies, Informatics and Telecommunications (Belgium)



Aalborg University (Denmark)



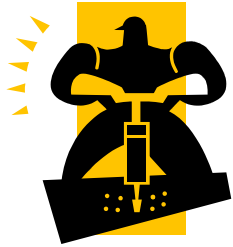
Dublin Institute of Technology (Ireland)



Institute for Future Studies (Austria)

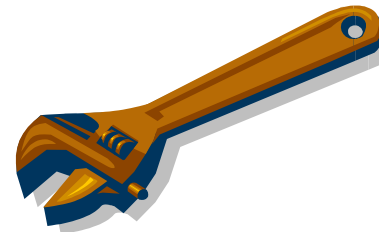


Glasgow Caledonian University (UK)  
**(coordinating institution)**



## Learn@Work – Work Packages

- **WP1** Formation of Expert Group and ‘State of the Art’ Report
- **WP2** Induction / Scaffolding Module Material
- **WP3** Pilot of Induction Material
- **WP4** Case Studies from Evaluated Pilot
- **WP5** Publication of ‘Good Practice Guide for Developers’ and Induction / Support materials for Learners
- **WP6** Dissemination
- **WP7** Evaluation
- **WP8** Management





## Learn@Work – Expected Outputs

- 1 Expert Group – Establishment of a transnational network
- 2 Report on current work based learner induction and support
- 3 Module – Induction to promote learner engagement
- 4 Evaluated Pilot
- 5 Publication – 'How to be a successful work based learner'
- 6 Guide – Good practice for developers
- 7 Online community
- 8 Website – Portal
- 9 Conference – Learn@Work





# Learning in the workplace

## Benefits

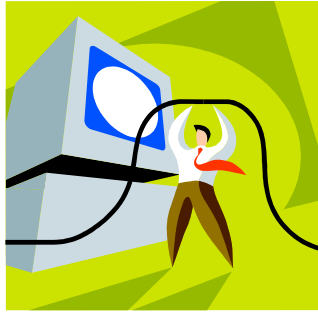
- **Motivation**
- **Relevance to the job performance**
- **Immediate transfer of learning**



# Learning in the workplace

## Challenges

- Isolation of the individual from other learners
- Need for personalised support
- Formalising and recognising  
Work Based Learning in an academic context



## Learn@Work addresses:

- Growing interest in learning through and at the work place
- Learner support via traditional / online means to encourage reflective practice
- Engagement, motivate and promote reflective and independent learning



## Learn@Work areas of interest are:

- Preparation and induction
- Development of reflective practice
- The support environment for learning
- Development of technical and study skills
- Enabling rich communication for learners



## Learn@Work Interim Report

- The Interim Report was submitted on July 2006
- The progress of the Learn@Work project has been recently well evaluated by the European Commission



## Glasgow Caledonian University

Three courses delivered by the Scottish Centre for Work Based Learning will provide material for pilot, which will be turned into case studies:

- **BA by Learning Contract - Theme: Learn@Work**
- **BSc by Learning Contract for Railway Operators**
- **DipHE by Learning Contract – Theme: Trade Unionism@Work**

## Induction and support for learners



- Induction begins before students start to learn
- Continuing support is very important during the course

# Induction materials and activities

- Pre-Induction (courses details)
- Basic computer skills
- Introduction to Blackboard
- Introduction to Work Based Learning
- Learning Skills

**Interactive  
Website**

**Workshops**

**Online  
Activities**

**Documents**

**Presentations**

**Virtual  
Learning  
Environment  
(Blackboard)**

# Learning skills supported by Effective Learning Service

Effective Learning Service: Glasgow Caledonian University - Microsoft Internet Explorer

File Edit View Favorites Tools Help

Address <http://www.gcal.ac.uk/els/index.html>

GLASGOW CALEDONIAN UNIVERSITY > ELS

Skip navigation | Accessibility

## Effective Learning Service

[Welcome](#)

- [About the ELS](#)
- [Appointments](#)
- [Drop-in Sessions](#)
- [Workshops](#)
- [Online help](#)
- [Online guides](#)
- [English Language Support](#)
- [Dyslexia](#)
- [Information for Staff](#)

### Effective Learning Service

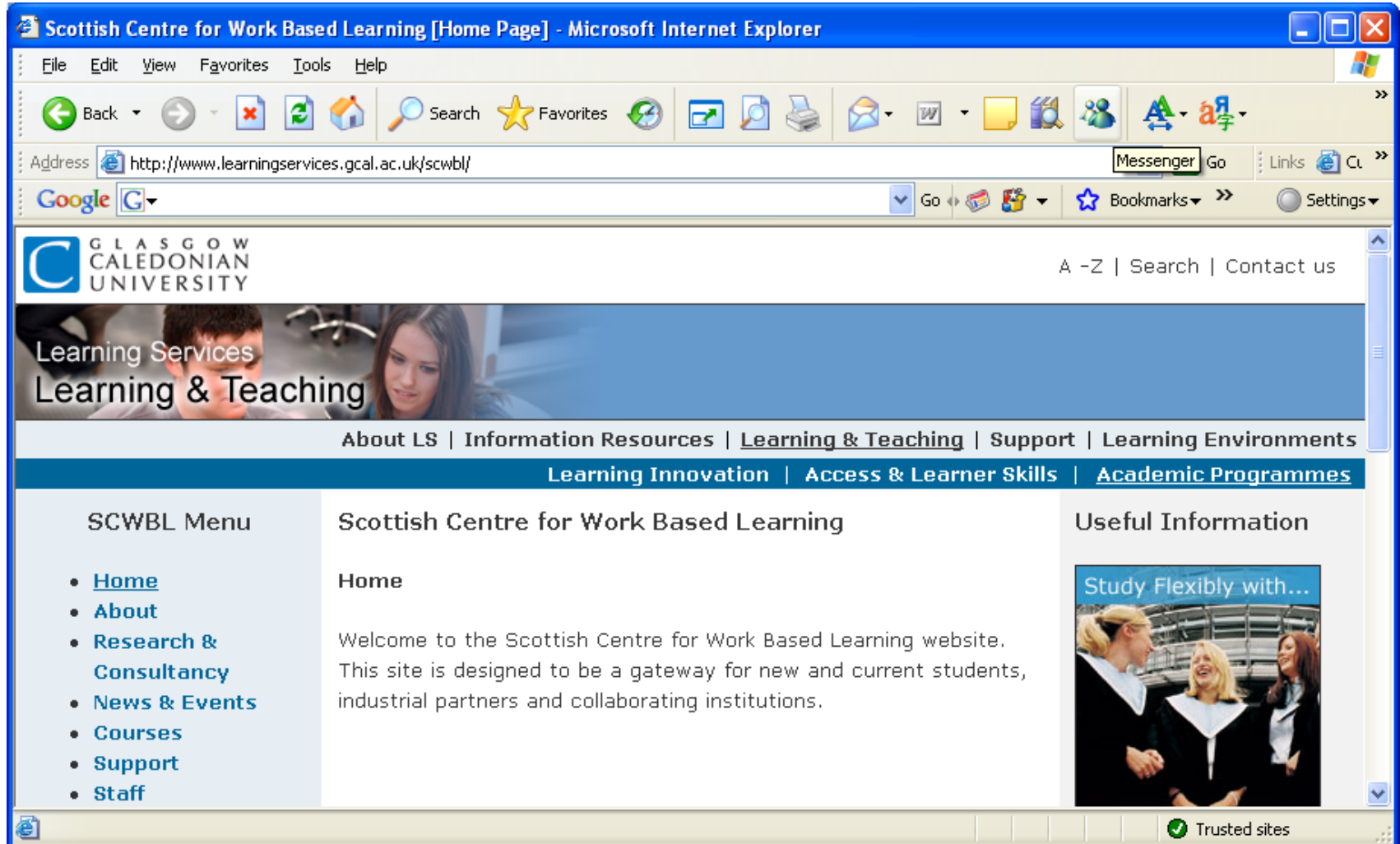
The ELS aims to assist **all GCU students** in improving their learning skills by providing appropriately tailored support.

The service is inclusive and we are committed to providing guidance that meets the specific learning and teaching needs of all students including disabled students and those with dyslexia. It is free and confidential.

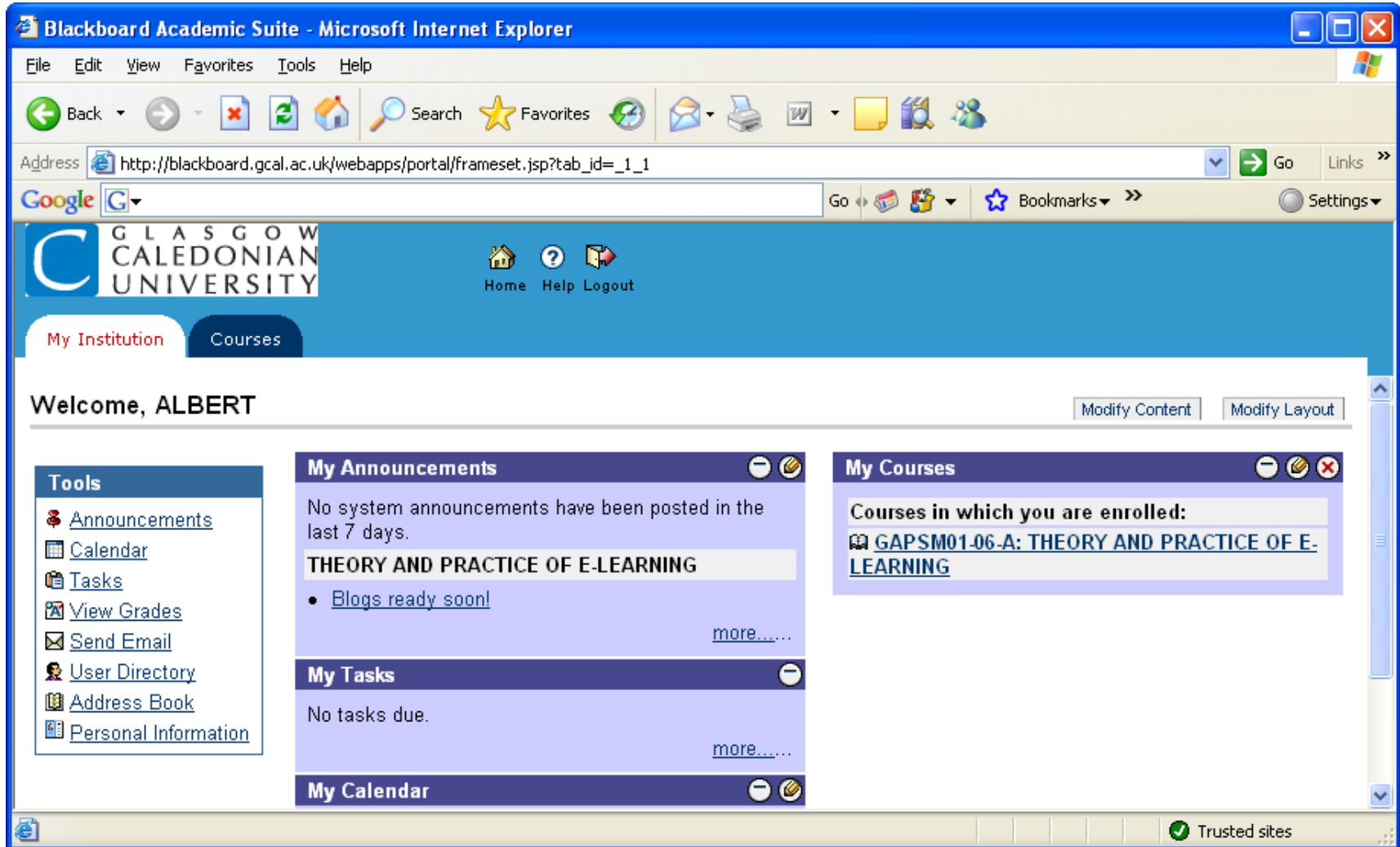
GLASGOW CALEDONIAN UNIVERSITY

Trusted sites

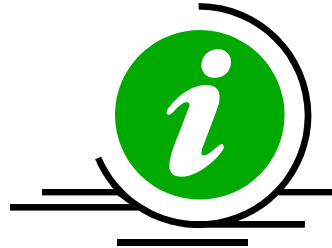
# Interactive Website



# Blackboard – a powerful learning environment



## Continuing support for learners



- Online support (Blackboard and website)
- Workshops and meetings
- Telephone contact
- E-mail system

The focus of **Learn@Work** is the balance between technical and learning skills...



...and the concept of workplace as a supported environment for lifelong learning



Glasgow Caledonian University

## Scottish Centre for Work Based Learning

Please visit our website:

[www.scwbl.gcal.ac.uk](http://www.scwbl.gcal.ac.uk)